

Quinoa Milk Nutrasorb®

Product Information

Cosmetic Applications

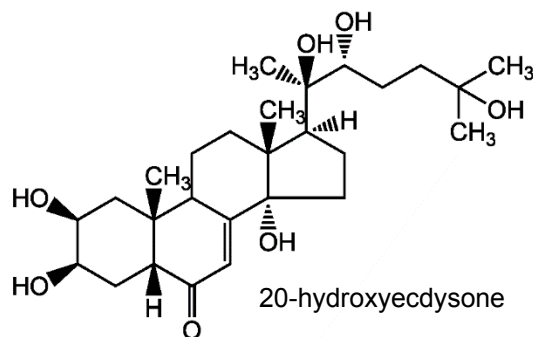
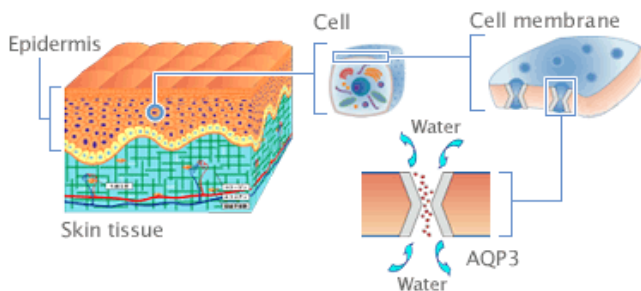


SKIN FIRMING - ANTI-AGING - REJUVENATING - ANTI-WRINKLE



Quinoa Milk is produced from seeds of quinoa (*Chenopodium quinoa*), a highly nutritious and stress tolerant crop of the Amaranthaceae family. Quinoa is traditionally used to enhance stamina and physical performance. Its bioactive constituents, phytoecdysteroids (mainly 20-hydroxyecdysone) strongly enhance synthesis of proteins in cells, including aquaporins, and induce wound healing and damage repair, while showing no hormonal effects or binding to steroid receptors. We developed a proprietary method for naturally extracting these bioactive compounds from quinoa seeds producing a unique, proprietary Quinoa Milk, which concentrates and combines skin firming and healing effects of quinoa phytoecdysteroids with anti-aging, anti-inflammatory and skin whitening effects of quinoa polyphenols. Uses include:

- Anti-aging, firming and damage repair
- After shaving
- Post cosmetic or skin procedures
- After peel



Nutrasorb LLC develops and markets a broad range of proprietary, functionally-enhanced and standardized ingredients with naturally concentrated, functionally-enhanced, stabilized, and bioavailable phytoactives from fruits and vegetables produced with innovative and proprietary Nutrasorb technology. Our ingredients are developed by researchers from major US universities and are scientifically validated and quality controlled.

For scientific publications describing Nutrasorb technology visit: www.nutrasorb.com/research.html

For more information contact: Nutrasorb 675 US Highway 1, North Brunswick, New Jersey 08902; info@nutrasorb.com

Nutrasorb LLC makes every possible effort to ensure that the information published is up to date and accurate but accepts no legal liability for errors or omissions and reserves the right to make changes without notice. Specifications, measurements and product data are for generalized information purposes only.